



Jackson
LUMBER & MILLWORK

CONTRACTOR CONNECTION

LMC Network TOGETHER WE BUILD

JacksonLumber.com

November 2025
Volume 13, Issue 4

Taking My Hacks



A message from Jackson Lumber & Millwork President, Mark Torrisi

I cannot believe that 2025 is quickly approaching the end, and the holiday season is right around the corner. While this year has presented some challenges, we are truly thankful for the opportunities that you have given us, and we look forward to providing you with the best possible service and materials again in the coming year.

What can we expect in 2026? We believe that there will be better economic conditions for our industry. Prospects of lower interest rates will help make new home purchases and home remodeling more affordable for homeowners.

In our region, over the next 12 to 18 months, residential construction will not experience a boom, but we should see steady, moderate growth. Many of the structural issues (costs, permitting, labor) will continue to have impact.

In Massachusetts, growth will likely be constrained, with stronger opportunities in niche/high-value segments such as energy-efficient homes, infill development, and regulation-driven projects. In southern New Hampshire, there are more favorable conditions for volume growth due to demand from relocation and relative affordability.

Remodeling in our entire region should remain steady. There is still

very solid opportunity, especially for contractors who tighten estimating, control supply chains, and lean into energy and accessibility upgrades. Southern New Hampshire currently offers somewhat stronger volume prospects, while Massachusetts presents opportunities around high-value energy or compliance-driven projects.

Forecasts for the lumber market for the first half of the year point to a modest recovery after a period of softness. Analysts from Forest Economic Advisors project prices to increase due to an increase in demand, driven by a gradual rebound in housing and remodeling activity.

That said, growth will likely be moderate rather than explosive. Lumber prices remain sensitive to housing starts, interest-rate trends, and mill production curtailments—any of which could shift the balance quickly.

For contractors, the takeaway is to plan around steady-to-rising lumber costs in early 2026.

I realize that these forecasts are made at a moment in time and things can change quickly in the world today. We will continue to do our best to stay up to date on industry trends and market conditions and pass along as much information as we can.

I want to thank all of you again for every opportunity you give us to be your supplier, and we take nothing for granted. All of us here at Jackson Lumber & Millwork wish you and your families a happy and safe holiday season.

mtorrisi@jacksonlumber.com

News From Our Mill

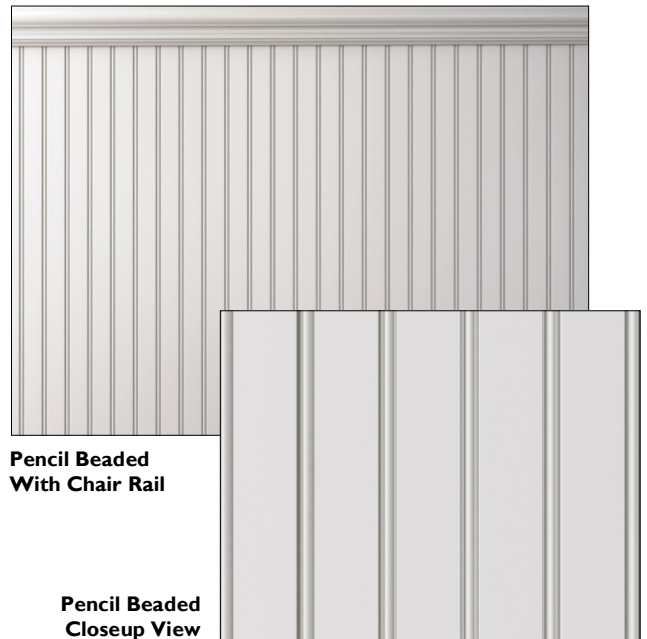
Now Fabricating Custom Beadboard Panels

Announcing new additions to our line of custom wainscoting panels. Precision milled in our Raymond, NH, millwork facility, these stunning beadboard panels are fabricated from premium Plum Creek MDF with the latest CNC technology.



A great way to add warmth and texture to modern farmhouse, cottage-style, traditional, or coastal homes, beadboard is the perfect choice for hallways, entryways, kitchens, and bathrooms.

Our easy to install, one-piece, cost-efficient custom panel system is the answer to your design needs. We will create classic beadboard panels to your specs, manufactured out of high quality, paint-grade Plum Creek MDF. All styles are precision milled in our Raymond facility to give you a beautiful, finished product with precise corners and a handsome profile.



Pencil Beaded With Chair Rail

Pencil Beaded Closeup View

Continued on Page 2



- Providing Solutions & Delivering Results Since 1946 -



Beadboard Panels

Continued from Page 1.

In addition to Pencil Beaded and Pencil Beaded Flat panels, we offer six timeless custom panel options, all fabricated from premium Plum Creek MDF with the latest CNC technology at our Raymond millwork facility. Choose from Classic Raised, Classic Flat, Raised, Flat, Shaker, Craftsman, Pencil Beaded Flat, and Pencil Beaded panel styles, all precision milled to your specifications.

FAST TURNAROUND

With a fast turnaround from order to delivery, your custom panels will be manufactured out of 5' x 12' MDF sheets. The most cost-effective design is a 30" tall panel with a filler and baseboard. However, any height is available (36", 48", 60"). Individual panels are custom made for each wall. For walls longer than 12', panels are butted together and held flush with a spline.

ROOM DESIGN & FIELD MEASUREMENT SERVICE

We will design your panels to fit your space. Professional measuring & design is done on-site to ensure easy-to-install panels that will fit perfectly in your room.

EASY INSTALLATION & PAINTING

Our innovative panel system saves you installation time and reduces painting prep time. There is no shrinkage, and there are no open seams, cracks, or nail holes to fill.

FINISHING OPTIONS

Chair rail is required to cover the seam between the wallboard and paneling. This will give your paneling a finished look.

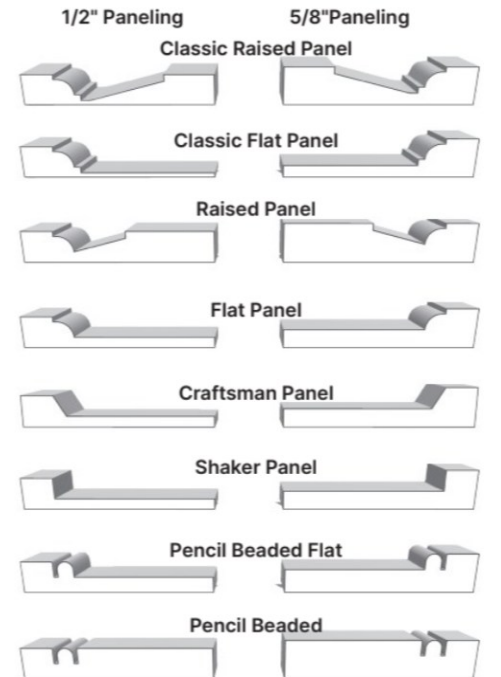
INSTALLATION PROCESS

Panels can be installed one of two ways:

1. Directly to stud framing.
2. Over Wallboard

Installation requires top and bottom fasteners (covered by chair rail and baseboard), and sometimes requires construction adhesive on wallboard or studs. When using any flat panel design and installing directly to stud framing, the 5/8" thick paneling is recommended. Paneling can be designed with or without baseboard. Electrical outlets can be located horizontally in the baseboard or in the bottom rail of the paneling.

PICK FROM 8 PANEL OPTIONS




Watch [this short video](https://www.youtube.com/watch?v=L0ng5PI1nMZE) to see how we use CNC technology to fabricate panels at our mill. Click on the link or go to: <https://www.youtube.com/watch?v=L0ng5PI1nMZE>


For more information, please contact your Jackson Rep.

Rebate News



Take advantage of these rebate offers from James Hardie and on Huber Wood's Advantech and ZipSystem products, available on purchases made by 12/31/25.

 **JamesHardie** For builders and contractors, this offer from James Hardie is available from 8/1/25 through 12/31/25. To submit for your rebate go to: [HardiePromo.com](https://www.hardie.com/promo).

- ◆ **Earn a \$600 rebate** when you purchase a minimum of 3,000 square feet of Hardie® Plank siding, Hardie® Trim, or Hardie® Soffit with ColorPlus® Technology finishes. All eligible purchases must be made on or before 11:59 PM CST December 31, 2025.

 **ENGINEERED WOODS** These offers are for first-time users, on purchases from 1/1/25 through 12/31/25.

For complete details and to submit for your rebate, go to: [HuberWood.com/rebates](https://www.huberwood.com/rebates).

- ◆ **Save up to \$3,000** on Advantech X-Factor Subflooring, Advantech Subflooring, and Advantech Subfloor Adhesive. 
- ◆ **Save up to \$7,850** on Zip System Sheathing (5/8", 1/2", 7/16"), Zip System Insulated Panels (R-3, R-6, R-9, R-12), Zip System Stretch Tape, Zip System Flashing Tape, Zip System Liquid Flash, Zip System Peel & Stick Underlayment, and Zip System Rain Screen. 

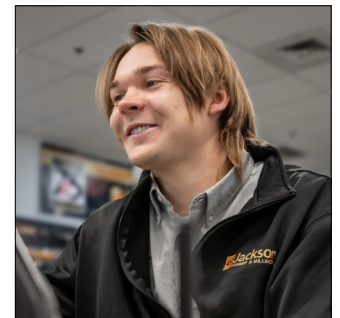
Employee Spotlight

Dean Jensen,
Inside Sales, Woburn

Stop by our Woburn store and say hi to Dean Jensen.

Dean earned his degree in Building & Construction Technology at UMass Amherst before joining the Jackson team about a year ago. Currently an inside sales representative in Woburn, Dean is happy to help our walk-in customers with lumber orders. He also assists contractors and homeowners with windows and doors. Dean especially enjoys getting to know our customers, helping everyone get the right products for their projects, and just generally being of service.

As far as millwork goes, Dean is knowledgeable about windows and doors, especially Harvey, Andersen, Therma-Tru, Marvin, and Paradigm. He works to expand his product knowledge and collaborative skills



Dean Jensen
Inside Sales, Woburn

every day, with the goal of being a well-rounded building materials supply professional.

Dean ran track and field at UMass Amherst and at his high school in Mansfield, MA. In his leisure time, he enjoys drawing, painting, playing the piano, music, video games, and watching movies and TV shows. He grew up in Mansfield, MA with his parents and two older sisters, and currently lives in Waltham, MA with his partner and their dog.

Customer Focus

Fox Construction, LLC
Deerfield, NH

Building Excellence Across New England

Founded in 2020 by Anthony Fusco, Fox Construction, LLC has quickly become a trusted name in New England’s construction industry. Originally launched as a framing and sitework company, Fox Construction has since evolved into a full-service development and project management firm specializing in custom residential homes, spec housing, and commercial projects.

Known for its high quality craftsmanship, attention to detail, and innovative building solutions, Fox Construction guides clients seamlessly from initial design through project completion. The company’s dedicated team works closely with homeowners, developers, and partners, emphasizing clear communication and collaboration to ensure every project’s success.

With expertise spanning civil excavation, building science, and large-scale project management, Fox Construction is well-versed in navigating the complexities of real estate development, including entitlements, permitting, and site planning. The firm has also built a strong network of reliable subcontractors who consistently deliver workmanship that exceeds expectations.

Fox Construction’s service area extends from southern New Hampshire to the Lakes Region, and throughout southern Maine from Kittery to Kennebunk. At any given time, the company manages several large developments alongside a dozen active single-family projects. Current work includes Townhomes at Capital Pointe, an 83-unit townhome community in Concord, NH; Harborview Retreat, a luxury, custom-designed waterfront home in Kennebunkport, ME; and the recently



Townhomes at Capital Pointe, Concord, NH

completed Nouria Station, a state-of-the-art truck stop and convenience store in Raymond, NH. Each project reflects the company’s unwavering commitment to precision, innovation, and lasting quality.

A Jackson Lumber & Millwork customer since day one, Anthony Fusco and the entire Fox Construction team rely on Jackson for a full range of building materials; from framing, roofing, and decking to millwork, cabinetry, and kitchen packages.

“The fact that Jackson has their own millwork department is so important to us,” says Fusco. “We can get the custom features we need for special projects, and their pre-built window and door packages make on-site installation seamless for our subcontractors.”

With a growing portfolio and a steadfast commitment to excellence, Fox Construction continues to raise the standard for quality building across New England.



Townhomes at Capital Pointe, Concord, NH

“The fact that Jackson has their own millwork department is so important to us. We can get the custom features we need for special projects, and their pre-built window and door packages make on-site installation seamless.”



Harborview Retreat, Kennebunkport, ME



Nouria Station, Raymond, NH



Jackson LUMBER & MILLWORK

JacksonLumber.com

5 CONVENIENT LOCATIONS:

AMESBURY, MA

67 Haverhill Rd.
Phone: 978-388-0366
Mon-Fri: 6:30 a.m. - 4:30 p.m.
Sat: 7:00 a.m. - 12:00 p.m.

LAWRENCE, MA

215 Market St.
Phone: 978-686-4141
Mon-Fri: 6:30 a.m. - 4:30 p.m.
Sat: 7:00 a.m. - 12:00 p.m.

RAYMOND, NH

10 Industrial Dr.
Phone: 603-895-5151
Mon-Fri: 6:30 a.m. - 4:00 p.m.

WOBURN, MA

10 Jefferson Ave.
Phone: 781-933-0057
Mon-Fri: 6:30 a.m. - 4:30 p.m.
Sat: 7:00 a.m. - 12:00 p.m.

JACKSON KITCHEN DESIGNS NORTH ANDOVER, MA

Butcher Boy Marketplace
1093 Osgood St. (Rt. 125)
Phone: 978-685-7770
Mon-Fri: 9:00 a.m. - 5:00 p.m.
Sat: 9:00 a.m. - 3:00 p.m.
Appointments available

Providing customers
with quality products,
services & solutions
on-time & in-full
every day.



ProSales
Dealer of the Year
2014

- Providing Solutions & Delivering Results Since 1946 -

Monthly Cost Index

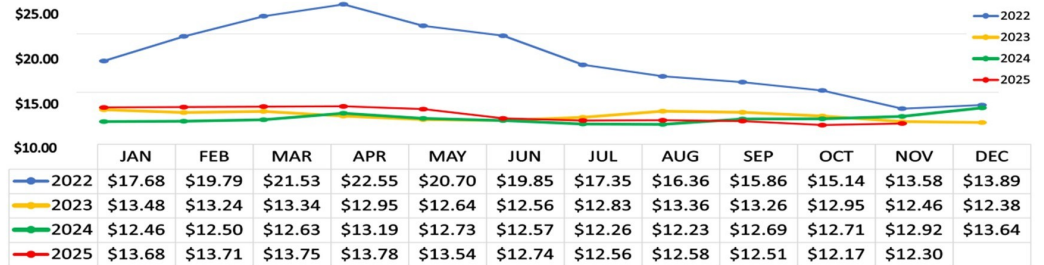
Stay on top of market pricing trends for
Framing Lumber and Materials.

Pricing is for a 36x24 House with a
20x20 Attached Garage (2,125 Sq. Ft.)
All quotes include taxes.



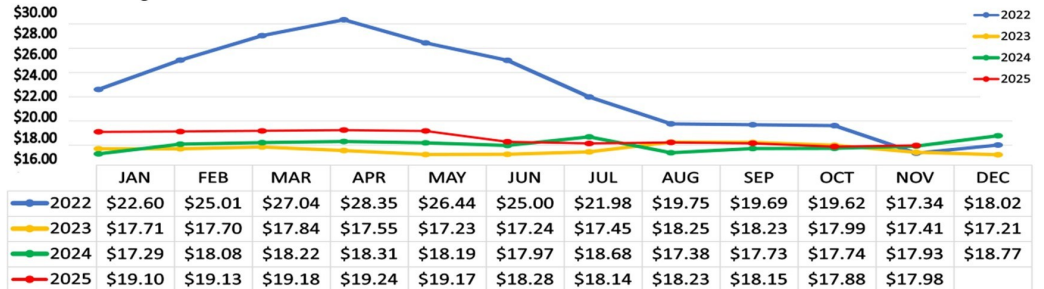
ECONOMY PRICE PER SQUARE ► QUOTE #177933

Includes: 2x6 Exterior Walls, 7/16 OSB Wall Sheathing and 1/2 Fir Roof Sheathing, 3/4" T&G OSB, Stick Framed Floor and Roof System, Double 4" Vinyl Siding, IKO Shingles and Roofing Components, Nails and Hangers.



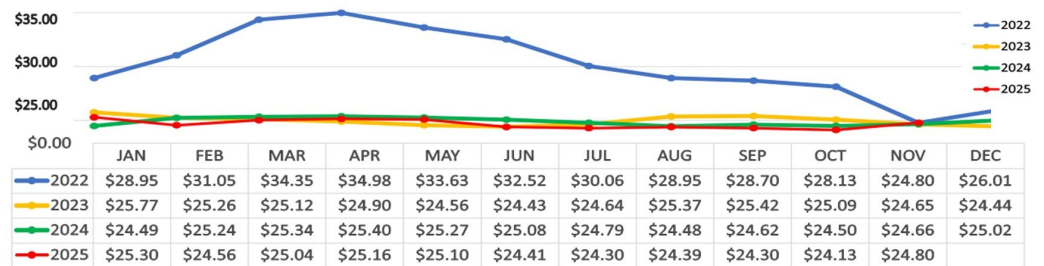
PREMIUM PRICE PER SQUARE ► QUOTE #420409

Includes: 2x6 Exterior Walls, 1/2" Zipwall & 5/8" Zipproof, Advantech Subfloor, Stick Framed Floor and Roof System, 5-1/4" Color Plus Hardie Siding, PVC Exterior Trim, IKO Cambridge Shingles and Roofing Components, Nails and Hangers.



PREMIUM PLUS PRICE PER SQUARE ► QUOTE #177944

Includes: The same specs as the premium price spec, however the floor joists are upgraded to an I Joist System.



These quotes represent current market prices and can only be used as a rough budget quote with the standard of the industry building practices. They do not include Windows, Doors, Decks, Porches, or Interior Finishes.

Holiday Hours



Thanksgiving:
Closed Nov. 27, open
until 2 p.m. Nov. 28.

Christmas:

Closing at 2 p.m. Dec. 24.
Closed Dec. 25—Dec. 27.



New Years:
Closing at 2 p.m. Dec 31.
Closed Jan 1. Open Jan. 2,
regular hours.

Events



Thanks for coming out to our September Dap and DeWalt events.
We are planning many more great events for 2026. Stay tuned!